



Spray guns airspray

Manual and automatic spray guns



Product families

EcoGun AS MAN – manual air spray guns

EcoGun AS AUTO – automatic air spray guns



EcoGun AS MAN

Manual air spray guns

The Dürr collection of manual air spray guns is designed for all kind of tasks in multiple application areas. The line of gravity feed spray guns are primarily used for coating of smaller area like car body repairs, furniture lacquer application and others. There is also a line of pressure feed spray guns which are primarily used for larger area painting. Special variants of spray guns are available for heavy duty application of high solid materials like enamels or glazes.



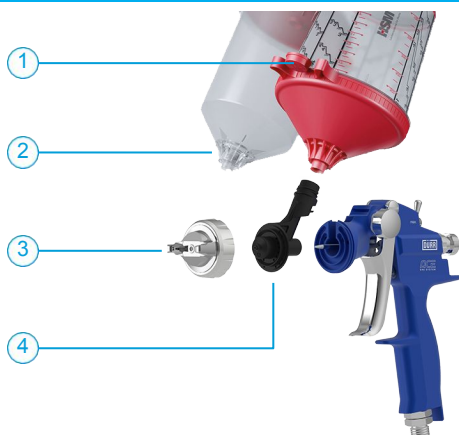
Watch product video



PRODUCT LINE			
	EcoGun 116	EcoGun 910	EcoGun ACE
Part No.	see page no. 18	see page no. 18	see page no. 19
Feeding	Gravity	Gravity	Gravity
Connector fluid	G3/8" / M16x1.5 (male)	G3/8" (male)	SPA system
Connector air	G1/4" (male)	G1/4" (male)	G1/4" (male)
Max. air pressure	6.0 bar (87 psi)	8.0 bar (116 psi)	7,0 bar (101 psi)
Nozzle sizes	1.0* / 1.2 / 1.3 / 1.4 / 1.6 / 1.8 / 2.0 / 2.2 / 2.8 / 4.0 mm	0.5* / 0.8* / 1.0 / 1.2 / 1.3 / 1.4 / 1.6 / 1.8 / 2.0 / 2.5 / 3.0 mm	1.2 / 1.3 / 1.4 / 1.6 / 1.8 / 2.0 / 2.5 mm **
Technical highlights	Bottom air inlet regulator. Optional extensions. Different material connectors available.	Air inlet regulation lever on top. Needle adjustment lock. Fine quality nozzles. Bayonet air cap and needle connection system.	Revolutionary disposable nozzle system ACE-SPE. Air inlet regulation lever on top. Fine quality nozzles. Quick Clip technology: removal and installation of the needle without changing the preset needle stop.
Field of use	General paint application. Primers, fillers, top coats in general industry etc. low duty abrasive materials like glazes, enamels or zinc paints.	Fine finish coatings. Top coats, clear coats, automotive fillers and primers.	Fine finish coatings. Top coats, clear coats, automotive fillers and primers.

* nozzles available as accessory only ** complete disposable nozzle sets ACE-SPE available as accessory

TECHNICAL ILLUSTRATION - EcoGun ACE



1 Disposable cup SPA EASY LINE MIX, 2 Disposable cup SPA EASY LINE,
3 Air cap (CF or LF/LVLP), 4 Disposable nozzle insert ACE-SPE



CUSTOMER BENEFITS

Top level quality coating

Simple to use, easy to maintain

Wide range of nozzle types to cover all applications

EcoGun AS MAN

Manual air spray guns



PRODUCT LINE

	EcoGun 246	EcoGun 249
Part No.	see page no. 19	see page no. 19
Feeding	Pressure	Pressure
Connector fluid	M14x1.5 / 3/8" Universal (male)	M14x1.5 / 3/8" Universal (male)
Connector air	G1/4" (male)	G1/4" (male)
Max. air pressure	6.0 bar (87 psi)	6.9 bar (100 psi)
Max. fluid pressure	6.0 bar (87 psi)	6.9 bar (100 psi)
Nozzle sizes	1.0 / 1.2 / 1.4 / 1.8 / 2.2 / 2.8* / 4.0* mm	1.0 / 1.2 / 1.4 / 1.8* / 2.2 mm
Technical highlights	Air inlet regulation lever on top. Different material inlets. Optional extensions. Stainless steel material path.	Bottom air inlet regulator. Needle adjustment lock. Fine quality nozzles. Different material inlets, heavy duty hardened nozzles. Stainless steel material path.
Field of use	General paint application. Primers, fillers, top coats, stains in general industry etc. low duty abrasive materials like glazes, enamels or zinc paints.	Fine finish coatings. Stains, top coats, clear coats, automotive fillers and primers. Heavy duty abrasive materials like glazes, enamels or zinc paints.

* nozzles available as accessory only



ACCESSORIES - GRAVITY CUPS

	600 ml G3/8"	600 ml G3/8"	600 ml M16x1.5	125 ml G3/8"	2000 ml G3/8" male
Part No.	N08010034	N08010075	N08010040	N08010031	N08010055
Material	Nylon	Nylon	Nylon	Nylon	Nylon
Filter sieve	0.275 mm	none	0.275 mm	none	none
Related spray guns	EcoGun 116 EcoGun 910	EcoGun 116 EcoGun 910	EcoGun 116	EcoGun 116 EcoGun 910	for small paint supply systems

EcoGun AS MAN

Manual air spray guns



ACCESSORIES - GRAVITY CUPS

	600 ml G3/8" Al	1000 ml G3/8" Al	EASY LINE	EASY LINE MIX
Part No.	N08010106	N08010107	N08010102 (550ml)	N08010103 (300ml) N08010104 (500ml) N08010105 (800ml)
Material	Aluminium	Aluminium	PP	PP
Filter sieve	none	none	Optional *	Optional *
Related spray guns	EcoGun 116 EcoGun 910	EcoGun 116 EcoGun 910	EcoGun ACE	EcoGun ACE

* M13060025 - SIEVE INSERT 195µm BIUE 70195 (60 pcs in a bag), M13060026 - SIEVE INSERT 125µm GREEN 70125 (60 pcs in a bag), M13060027 - SIEVE INSERT 105µm RED 70105 (60 pcs in a bag)

ORDER NUMBERS

EcoGun 116 EcoGun 910

Part no.	Air cap	Nozzle size	Cup
N36200283	Al	1.2	Cup 600 ml, M16x1,5
N36200284	Al	1.3	Cup 600 ml, M16x1,5
N36200148	Al	1.4	Cup 600 ml, 3/8"
N36200285	Al	1.4	Cup 600 ml, M16x1,5
N36200286	Al	1.6	Cup 600 ml, M16x1,5
N36200110	Al	1.8	Cup 600 ml, 3/8"
N36200287	Al	1.8	Cup 600 ml, M16x1,5
N36200101	Al	2.0	Cup 600 ml, 3/8"
N36200288	Al	2.0	Cup 600 ml, M16x1,5
N36200102	Al	2.2	Cup 600 ml, 3/8"
N36200289	Al	2.2	Cup 600 ml, M16x1,5
N36200103	EI	2.8	Cup 600 ml, 3/8"
N36200290	EI	2.8	Cup 600 ml, M16x1,5
N36200291	GI	4.0	Cup 600 ml, M16x1,5

Part no.	Air cap	Nozzle size	Cup
N36200425	CF	1.0	Cup 600 ml, 3/8"
N36200319	CF	1.2	Cup 600 ml, 3/8"
N36200345	CF	1.3	Cup 600 ml, 3/8"
N36200246	CF	1.4	Cup 600 ml, 3/8"
N36200403	CF	1.6	Cup 600 ml, 3/8"
N36200126	CF	1.8	Cup 600 ml, 3/8"
N36200247	CF	2.0	Cup 600 ml, 3/8"
N36200405	CF	2.5	Cup 600 ml, 3/8"
N36200369	CF	3.0	Cup 600 ml, 3/8"
N36200401	IF	1.0	Cup 600 ml, 3/8"
N36200370	IF	1.2	Cup 600 ml, 3/8"
N36200379	IF	1.3	Cup 600 ml, 3/8"
N36200336	IF	1.4	Cup 600 ml, 3/8"
N36200406	IF	1.6	Cup 600 ml, 3/8"
N36200371	IF	1.8	Cup 600 ml, 3/8"
N36200402	IF	2.0	Cup 600 ml, 3/8"
N36200404	IF	2.5	Cup 600 ml, 3/8"
N36200426	IF	3.0	Cup 600 ml, 3/8"

EcoGun AS MAN

Manual air spray guns

ORDER NUMBERS

EcoGun

Part no.	Air cap	Nozzle size	Connector fluid	Air regulation
N36200136	IP	1.0	3/8" direct connect	yes
N36200111	IP	1.2	3/8" direct connect	yes
N36200150	IP	1.2	3/8" direct connect (long connector)	No (plug instead)
N36200424	IP	1.2	3/8" direct connect	No (plug instead)
N36200106	IP	1.4	3/8" direct connect (long connector)	No (plug instead)
N36200164	IP	1.4	3/8" direct connect	yes
N36200212	IS	2.2	3/8" direct connect	yes
N36200213	IS	2.2	M14x1.5 external material pipe	yes

EcoGun

Part no.	Air cap	Nozzle size	Connector fluid
N36200308	AI	1.0	M14x1,5 external material pipe
N36200355	AI	1.2	M14x1,5 external material pipe
N36200353	AI	1.4	M14x1,5 external material pipe
N36200147	PC	1.2	3/8" external material pipe
N36200142	PC	1.4	3/8" external material pipe
N36200144	PC	1.8	3/8" external material pipe
N36200278	PC	2.2	3/8" external material pipe

EcoGun

Part no.	Air cap	Nozzle size
N36270002	CF (A) 0,5-1,2mm	1.2
N36270003	CF (B) 1,3-1,6mm	1.3
N36270004	CF (B) 1,3-1,6mm	1.4
N36270005	CF (B) 1,3-1,6mm	1.6
N36270006	CF (C) 1,8-2,5mm	1.8
N36270007	CF (C) 1,8-2,5mm	2.0
N36270008	CF (C) 1,8-2,5mm	2.5
N36270009	IF/IVIP (A) 0,5-1,2mm	1.2
N36270010	IF/IVIP (B) 1,3-1,6mm	1.3
N36270011	IF/IVIP (B) 1,3-1,6mm	1.4
N36270012	IF/IVIP (B) 1,3-1,6mm	1.6
N36270013	IF/IVIP (C) 1,8-2,5mm	1.8
N36270014	IF/IVIP (C) 1,8-2,5mm	2.0
N36270015	IF/IVIP (C) 1,8-2,5mm	2.5

Note: disposable nozzle inserts and disposable cups to be bought separately.

EcoGun AS MAN

Manual air spray guns



AIR CAPS

	AL	EL	GL	PC
Part No.	M35030162	M35030163	M35030164	M35030091
Compatible spray guns	EcoGun 116 / EcoGun 246	EcoGun 116 / EcoGun 246	EcoGun 116 / EcoGun 246	EcoGun 246
Nozzle sizes	1.0 / 1.2 / 1.3 / 1.4 / 1.6 / 1.8 / 2.0 / 2.2 mm	2.8 mm	4.0 mm	1.2 / 1.4 / 1.8 / 2.0 / 2.2 mm
Air pressure recom.	2.0-3.5 bar (29-51 psi)	2.5-4.0 bar (36-58 psi)	3.0-4.5 bar (44-65 psi)	2.0-3.5 bar (29-51 psi)
Field of use	Top coats, base coats, primers, enamels.	General paints, primers or fillers, high flow rate.	General paints, primers or fillers, very high flow rate.	General paints, primers or fillers.



	PS	LP	LS
Part No.	M35030166	M35030082	M35030084
Compatible spray guns	EcoGun 246	EcoGun 249	EcoGun 249
Nozzle sizes	1.4 / 1.8 / 2.2 mm	1.0 / 1.2 / 1.4 mm	1.4 / 1.8 / 2.2 mm
Air pressure recom.	2.5-4.0 bar (36-58 psi)	2.0-3.5 bar (29-51 psi)	2.5-4.0 bar (36-58 psi)
Field of use	Abrasive paints e.g. zinc paints.	Fine finish coating, top coats, clear coats, mordants.	Abrasives, glazes, enamels, zinc paints.

EcoGun AS MAN

Manual air spray guns



AIR CAPS				
	CF (0.5-1.2)	CF (1.3-1.6)	CF (1.8-2.5)	CF (3.0)
Part No.	M35030069	M35030070	M35030071	M35030072
Compatible spray guns	EcoGun 910	EcoGun 910	EcoGun 910	EcoGun 910
Nozzle sizes	0.5 / 0.8 / 1.0 / 1.2 mm	1.3 / 1.4 / 1.6 mm	1.8 / 2.0 / 2.5 mm	3.0 mm
Air pressure recom.	2.0-3.5 bar (29-51 psi)	2.0-3.5 bar (29-51 psi)	2.0-3.5 bar (29-51 psi)	2.0-3.5 bar (29-51 psi)
Field of use	Top coats, base coats, primers, decorative coating.	Top coats, base coats, primers.	Top coats, base coats, primers.	Base coats, primers.

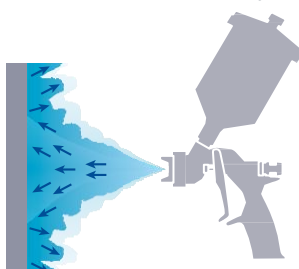


	LF (LVLP) (0.5-1.2)	LF (LVLP) (1.3-1.6)	LF (LVLP) (1.8-2.5)	LF (LVLP) 3.0
Part No.	M35030073	M35030074	M35030075	M35030076
Compatible spray guns	EcoGun 910	EcoGun 910	EcoGun 910	EcoGun 910
Nozzle sizes	0.5 / 0.8 / 1.0 / 1.2 mm	1.3 / 1.4 / 1.6 mm	1.8 / 2.0 / 2.5 mm	3.0 mm
Air pressure recom.	2.0-3.5 bar (29-51 psi)	2.0-3.5 bar (29-51 psi)	2.0-3.5 bar (29-51 psi)	2.0-3.5 bar (29-51 psi)
Field of use	Top coats, base coats, primers. IVIP technology.	Top coats, base coats, primers. IVIP technology.	Top coats, base coats, primers. IVIP technology.	Base coats, primers. IVIP technology.

AIR SPRAY METHODS

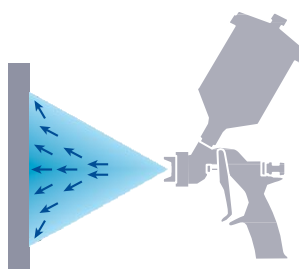
CONVENTIONAL

Extremely fine atomization and great surface coverage. The higher dynamic energy compared to HVIP/HVIP technology often keeps the transfer efficiency (TE) considerably below those achieved with IVIP/HVIP guns. This is due to particle bounce back from the object and increased overspray.



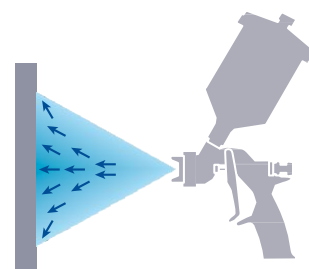
HVLP (HIGH VOLUME LOW PRESSURE)

low spray pressure technology. Terminology for an internationally recognized low-pressure technology whereby the transfer efficiency rate has to exceed 65%, while the maximum air pressure under the air cap is below 0.7 bar.



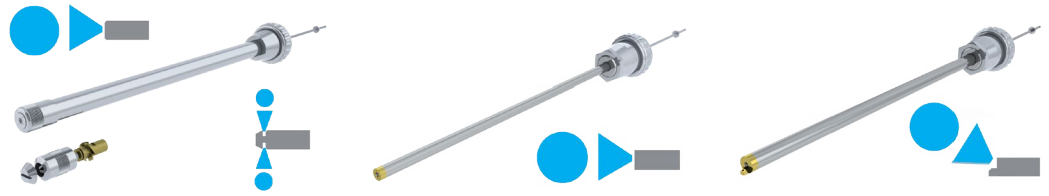
LVLP (LOW VOLUME LOW PRESSURE)

Further development of HVIP technology to achieve a TE comparable to that of HVIP technology but still being able to spray difficult materials with good quality results.



EcoGun AS MAN

Manual air spray guns



ACCESSORIES - EXTENSIONS

	LPS	NP 250	NS 250
Part No.	M19140010 / M19140011 / M19140012 / M19140013	M19140016	M19140017
length	300 / 600 / 1,000 / 1,500 mm	250 mm	250 mm
Outer diameter	18 mm	10 mm	10 mm
Nozzle size	2.2 mm	1.2 mm	1.2 mm
Compatible spray guns	EcoGun 116, EcoGun 246	EcoGun 116, EcoGun 246	EcoGun 116, EcoGun 246
Spray pattern	Direct round spray or circular spray for inner parts of pipes.	Direct round spray.	Side spray beam.

EcoGun AS AUTO

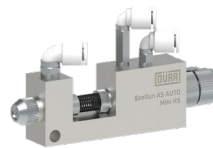
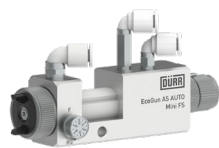
Automatic air spray guns

The wide range of automatic air spray guns is tailored to fulfill many kinds of application jobs across all industries. There are spray guns suitable for standard paint applications and special coverage applications in ceramic or glass industry. Other spray guns can be used for dot marking or very small area coating. All automatic spray guns are capable for fully controlled remote operation by the production control systems.



PRODUCT LINE

	EcoGun AS AUTO	EcoGun AS AUTO pro	EcoGun AS AUTO pro HD
Part No.	see page no. 26	see page no. 26	see page no. 26
Connector fluid	G1/4" (male thread)	1/4" Universal (male)	3/8" Universal (male)
Connector air atom./cont.	Push-in 8 mm / Push-in 6 mm	Push-in 8 mm / Push-in 6 or 4 mm	Push-in 8 mm / Push-in 6 or 4 mm
Max. air pressure atom.	6.0 bar (87 psi)	8.0 bar (116 psi)	8.0 bar (116 psi)
Max. air pressure cont.	4.0 bar (58 psi)	6.0 bar (87 psi)	6.0 bar (87 psi)
Max. fluid pressure	6.0 bar (87 psi)	4.0 bar (58 psi)	4.0 bar (58 psi)
Nozzle sizes	0.8 / 1.0 / 1.2 mm	0.5 / 0.8 / 1.0 / 1.2 / 1.3 / 1.4 / 1.6 / 1.8 / 2.0 / 2.5 mm	0.8 / 1.0 / 1.2 / 1.5 / 1.8 / 2.0 / 2.5 mm
Technical highlights	Two material inlets for circulation. Optional remote control of spray pattern. Calibrated bracket. Stainless steel material path. Optional extensions.	Two material inlets for circulation. Optional remote control of spray pattern. Stainless steel material path. Air caps and nozzles for IVIP. Coated nozzles and needles for longer lifetime.	Two material inlets for circulation. Optional remote control of spray pattern. Stainless steel material path. Hardened nozzles for heavy duty applications.
Field of use	Usual paint application, primers, base coats, top coats, clear coats.	Usual paint application, primers, base coats, top coats, clear coats.	Enamels, glazes or other high abrasive materials in ceramic industry. Special purpose applications with round / rotary spray jet.

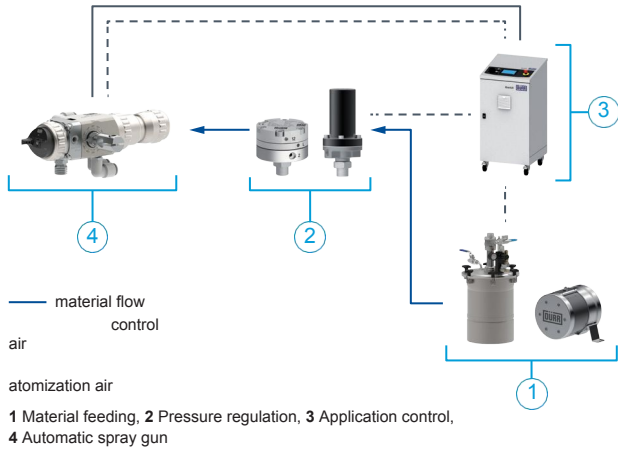


	EcoGun AS AUTO Mini FS	EcoGun AS AUTO Mini RS
Part No.	see page no. 26	see page no. 26
Connector fluid	Push-in 6 mm	Push-in 6 mm
Connector air atom./cont.	Push-in 6 mm / Push-in 6 mm	Push-in 6 mm / Push-in 6 mm
Max. air pressure atom.	3.0 bar (44 psi)	3.0 bar (44 psi)
Max. air pressure cont.	5.0 bar (73 psi)	5.0 bar (73 psi)
Max. fluid pressure	1.5 bar (22 psi)	1.5 bar (22 psi)
Nozzle sizes	0.6 / 0.8 / 1.0 mm	0.6 / 0.8 / 1.0 / 1.2 mm
Technical highlights	Flat to round spray pattern regulation. Remote or manual horn air regulation. Stainless steel nozzles.	Round spray pattern. Stainless steel nozzles. Optional extensions.
Field of use	Small area painting, dot marking.	Small area painting, dot marking.

EcoGun AS AUTO

Automatic air spray guns

TECHNICAL ILLUSTRATION



CUSTOMER BENEFITS



Wide range of spray gun types to fit all kinds of applications
Top level quality coating

Simple to use, easy to maintain

Wide range of nozzle types to cover all applications

ACCESSORIES - EXTENSION



	LPS	NP 250	NS 250
Part No. (length / nozzle size)	M19140022 (300 mm), M19140023 (500 mm)	M19140020	M1914002
length	300 / 500 mm	250 mm	250 mm
Outter diameter	18 mm	10 mm	10 mm
Nozzle size	2.2 mm	1.2 mm	1.2 mm
Compatible spray guns	EcoGun AS AUTO	EcoGun AS AUTO	EcoGun AS AUTO
Spray pattern	Direct round spray or circular spray for inner parts of the pipe.	Direct round spray.	Side spray beam.



	DS A 100
Part No. (nozzle size)	M19140006 (0.6 mm), M19140007 (0.8 mm), M19140008 (1.0 mm), M19140009 (1.2 mm)
length	100 mm
Outter diameter	14 mm
Nozzle size	0.6 / 0.8 / 1.0 / 1.2 mm
Compatible spray guns	EcoGun AS AUTO Mini RS
Spray pattern	Direct round spray.

EcoGun AS AUTO

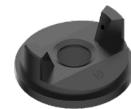
Automatic air spray guns



AIR CAPS			
	CF	LF (LVLP)	SF (conv.)
Part No. (nozzle size)	M35030174 (0.5-0.8 mm), M35030175 (1.0-1.2 mm), M35030176 (1.3-1.6 mm), M35030177 (1.8-2.5 mm)	M35030170 (0.5-1.2 mm), M35030171 (1.3-1.6 mm), M35030172 (1.8-2.5 mm)	M35030180 (1.0-1.2 mm) M35030179 (0.5-0.8 mm)
Compatible spray guns	EcoGun AS AUTO pro	EcoGun AS AUTO pro IVIP	EcoGun AS AUTO pro
Nozzle sizes	0.5-0.8 / 1.0-1.2 / 1.3-1.6 / 1.8-2.5 mm	0.5-1.2 / 1.3-1.6 / 1.8-2.5 mm	0.5-0.8 / 1.0-1.2 mm
Air pressure recom.	2.0-2.5 bar (29-36 psi)	2.0-2.5 bar (29-36 psi)	2.0-2.5 bar (29-36 psi)
Field of use	Top coats, base coats, primers, UV-coats.	Top coats, base coats, primers, UV-coats.	Top coats, decorative coatings (e.g. cosmetic and glass industry).



	Circular jet Rd.	FLRD	Rotary jet Dr.
Part No. (nozzle size)	M35030088 (0.8mm) M35030145 (1.0mm) M35030146 (1.2mm)	M35030107 (1.0mm) M35030110 (1.5mm) M35030111 (1.8mm) M35030112 (2.0mm) M35030113 (2.5mm)	M35030128 (1.2mm) M35030129 (1.5mm)
Compatible spray guns	EcoGun AS AUTO pro HD	EcoGun AS AUTO pro HD	EcoGun AS AUTO pro HD
Nozzle sizes	0.8 - 1.2 mm	1.0 - 2.5 mm	1.2 / 1.5 mm
Air pressure recom.	2.0-2.5 bar (29-36 psi)	2.0-2.5 bar (29-36 psi)	2.0-2.5 bar (29-36 psi)
Field of use	Top coats, base coats, decorative coatings.	Ceramic glazes, enamels.	Ceramic glazes, enamels, heavily atomized materials like adhesives.



	HM (HVLP)	PL	DSALM 10
Part No.	M35030092	M35030087	M35030093
Compatible spray guns	EcoGun AS AUTO	EcoGun AS AUTO	EcoGun AS AUTO Mini FS
Nozzle sizes	1.0 / 1.2 mm	0.8 / 1.0 / 1.2 mm	0.6 / 0.8 / 1.0 mm
Air pressure recom.	1.8 bar (26 psi)	2.5-3.5 bar (36-51 psi)	2.0 bar (29 psi)
Field of use	Top coats, mordants (lower viscosity).	Fine finish coatings, top & clear coats.	Varnishes or paints with lower viscosity, fine atomization, small area coatings.

EcoGun AS AUTO

Automatic air spray guns

ORDER NUMBERS

EcoGun AS

Part no.	Name	Air cap	Nozzle size
N36210117	EcoGun AS AUTO 08 PI B	PI	0.8
N36210118	EcoGun AS AUTO 08 PI S	PI	0.8
N36210183	EcoGun AS AUTO 10 HM B	HM	1.0
N36210144	EcoGun AS AUTO 10 HM S	HM	1.0
N36210143	EcoGun AS AUTO 10 PI B	PI	1.0

EcoGun AS AUTO

Part no.	Configuration code	Air cap	Nozzle size
N36210146	05 SST CF ACV G14z P8	CF	0.5
N36210232	05 SST CF RC G14z	CF	0.5
N36210167	05 SST IF ACV G14z P8	IF	0.5
N36210103	05 SST IF RC G14z P8	IF	0.5
N36210112	08 SST CF ACV G14z P8	CF	0.8
N36210175	08 SST CF RC G14z P8	CF	0.8
N36210128	08 SST IF ACV G14z P8	IF	0.8
N36210208	08 SST IF RC G14z	IF	0.8
N36210124	08 SST SF ACV G14z P8	SF	0.8
N36210159	10 SST CF ACV G14z P8	CF	1.0
N36210192	10 SST CF RC G14z P8	CF	1.0
N36210194	10 SST IF ACV G14z P8	IF	1.0
N36210182	10 SST IF RC G14z P8	IF	1.0
N36210181	10 SST SF ACV G14z P8	SF	1.0
N36210162	12 SST CF ACV G14z P8	CF	1.2
N36210156	12 SST CF RC G14z P8	CF	1.2
N36210100	12 SST IF ACV G14z P8	IF	1.2
N36210246	12 SST IF RC G14z	IF	1.2
N36210157	12 SST SF ACV G14z P8	SF	1.2

Other nozzle sizes are on request!

EcoGun AS AUTO Mini FS

Part no.	Name	Nozzle size
N36210114	EcoGun AS AUTO Mini FS 06	0.6
N36210106	EcoGun AS AUTO Mini FS 08	0.8
N36210116	EcoGun AS AUTO Mini FS 10	1.0

Part no.	Name	Air cap	Nozzle size
N36210119	EcoGun AS AUTO 10 PI S	PI	1.0
N36210178	EcoGun AS AUTO 12 HM B	HM	1.2
N36210195	EcoGun AS AUTO 12 HM S	HM	1.2
N36210120	EcoGun AS AUTO 12 PI B	PI	1.2
N36210121	EcoGun AS AUTO 12 PI S	PI	1.2

EcoGun AS AUTO Pro

Part no.	Configuration code	Air cap	Nozzle size
N36210239	08 SST RS ACV G38z	RS	0.8
N36210136	10 SST FS ACV ..	FS	1.0
N36210220	10 SST RS ACV G38z	RS	1.0
N36210218	12 SST RS ACV G38z	RS	1.2
N36210240	12 SST TS ACV G38z	TS	1.2
N36210138	15 SST FS ACV ..	FS	1.5
N36210150	15 SST FS ACV ...	FS	1.5
N36210185	15 SST FS RC ...	FS	1.5
N36210200	15 SST FS RC G38z	FS	1.5
N36210248	15 SST TS ACV G38z	TS	1.5
N36210153	18 SST FS ACV ..	FS	1.8
N36210247	20 SST FS ACV G38z	FS	2.0
N36210139	25 SST FS ACV ..	FS	2.5
N36210229	XC 15 SSH FS ACV..	FS	1.5
N36210231	XC 18 SSH FS ACV..	FS	1.8
N36210230	XC 25 SSH FS ACV..	FS	2.5

EcoGun AS AUTO Mini

Part no.	Name	Nozzle size	Extension
N36210152	EcoGun AS AUTO Mini RS 06 N	0.6	N
N36210110	EcoGun AS AUTO Mini RS 08 N	0.8	N
N36210132	EcoGun AS AUTO Mini RS 10 N	1.0	N
N36210151	EcoGun AS AUTO Mini RS 12 N	1.2	N
N36210158	EcoGun AS AUTO Mini RS 06 100	0.6	100 mm
N36210173	EcoGun AS AUTO Mini RS 08 100	0.8	100 mm
N36210244	EcoGun AS AUTO Mini RS 10 100	1.0	100 mm
N36210245	EcoGun AS AUTO Mini RS 12 100	1.2	100 mm