

Spray guns airless

Manual and automatic airless spray guns



Product families

EcoGun AL MAN – manual airless spray guns

EcoGun AL AUTO – automatic airless spray guns



EcoGun AL MAN

Manual airless spray guns

Manual airless spray guns are suitable for high pressure paint application. They can be used for anti corrosion protection coating of large steel structures or coating of wood structures. Functionality can be extended by using extensions which can help to paint areas which are difficult to reach. The modular design of these extensions allows to assemble different lengths and angles. Airless spray guns may be used with reversible nozzles that are available in a large number of sizes and angles.



PRODUCT LINE	
	EcoGun AL MAN 300
Part No.	see table below
Connector fluid	1/4" NPSM (male)
Max. fluid pressure	300 bar (4,350 psi)
Nozzle bracket connector	11/16"-16 UN
Nozzle sizes	0,18 / 0,23 / 0,28 / 0,33 / 0,38 / 0,43 / 0,48 / 0,53 / 0,58 / 0,63 / 0,68 / 0,73 / 0,78 mm *
Technical highlights	External material inlet, suitable for paint heating.
Field of use	Anti corrosion protection, penetration and sealing applications. Wood building, metal and automotive industry.

* See complete range of nozzles on [page no. 34](#) and [page no. 35](#)

ORDER NUMBERS - EcoGun AL MAN 300		
Part no.	Nozzle and features	Filter
N36240110	0,43mm 50°/517" reversible nozzle, needle seat made of POM	no filter *
N36240137	without nozzle (nozzles for sealing applications are available separately), needle seat made of POM	no filter *
N36240139	without nozzle (nozzles for sealing applications are available separately), needle seat made of tungsten carbide	no filter *

* available as accessory

CUSTOMER BENEFITS



Perfectly balanced ergonomic shape of spray gun body that minimizes fatigue

Material passage ways made of stainless steel

External material supplying part allows application of heated paint

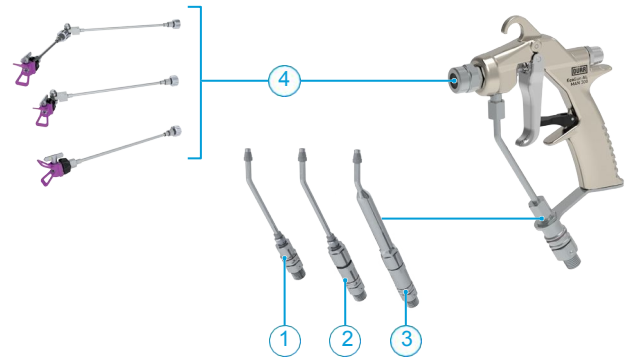
Wide range of available spray nozzles

Optional extensions available (up to 900 mm)

Easy cleaning and maintenance

ATEX EX II 2G T60°C X

TECHNICAL ILLUSTRATION



EcoGun AL MAN – Optional parts

- 1 Material inlet w/o filter, 2 Material inlet with short filter,
- 3 Material inlet with long filter, 4 Extensions - modular system

EcoGun AL AUTO

Automatic airless spray guns

Automatic airless spray guns are suitable for high pressure paint application. They can be used for anti corrosion protection, coating of large steel structures or penetration of wood structures. Functionality can be extended by using extensions to paint areas which are difficult to reach. Modular design of these extensions allows to assemble different lengths and angles. Airless spray guns use reversible nozzles which are provided in a large number of sizes and angles.



PRODUCT LINE	
EcoGun AL AUTO	
Part No.	see table on page no. 35
Connector fluid	G1/4" or M14x1,5 (male thread)
Connector air control	Push-in 6 mm
Max. air pressure cont.	5.0 bar (73 psi)
Max. fluid pressure	300 bar (4,350 psi)
Nozzle bracket connector	11/16"-16 UN 7/8"-14 UNF
Nozzle sizes	0.18 / 0.23 / 0.28 / 0.33 / 0.38 / 0.43 / 0.48 / 0.53 / 0.58 / 0.63 / 0.68 / 0.73 / 0.78 mm *
Technical highlights	Two options for closing valve diameter (large for very high viscosity material). Two material inlets for circulation. Spray gun bracket for secure repositioning.
Field of use	Anti corrosion coating. Penetration application.

* See complete range of nozzles on [page no. 34](#) and [page no. 35](#)



CUSTOMER BENEFITS

Material passage ways made of stainless steel

Wide range of reversible

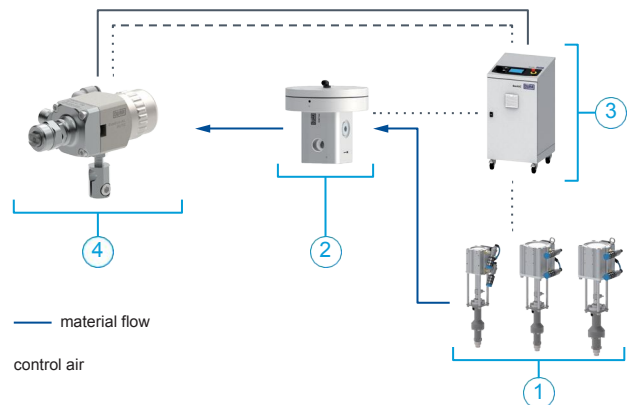
nozzles Optional extensions

Max. fluid pressure 300 bar (4,350 psi)

Direct material supply or material circulation

Easy cleaning and maintenance

TECHNICAL ILLUSTRATION

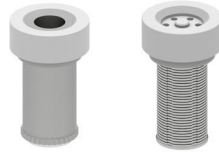


1 Material feeding, 2 Pressure regulation, 3 Application control, 4 Automatic spray gun



EXTENSIONS FOR EcoGun AL			
	Extension pipes	Rotary joint	Direct joint
Part No.	M19140001 / M19140002 / M19140004 / M19140005	M22150012	M01010201
length	150 / 300 / 600 / 900 mm	—	—
Thread	11/16"-16 UN	11/16"-16 UN	11/16"-16 UN
Max. fluid pressure	250 bar (3,600 psi)	250 bar (3,600 psi)	250 bar (3,600 psi)
Usage	Extension tube with different lengths. By using connecting joints pipes can be connected to make any other length.	Rotary joint allows bending spray gun beam in any angle.	Direct joint is used to connect spray tip bracket with extension for straight spraying.

EcoGun AL MAN/AUTO



SELECTED SPARE PARTS - AIRLESS & AIR-ASSIST

	Filters - long	Filters - short	Nozzle guard
Part No.	200 msh red (M13060010) 100 msh yellow (M13060011) 50 msh white (M13060012) 30 msh green (M13060013)	100 msh (M13060017) 200 msh (M13060018)	M60020001 Reversible nozzles Thread: 11/16"-16 UN Safety guard
Compatible spray guns	EcoGun AI MAN 300 EcoGun AA MAN	EcoGun AI MAN 300	EcoGun AI MAN 300 EcoGun AI AUTO

Complete list of accessories can be found in the webshop.



REVERSIBLE NOZZLE AIRLESS

Orifice size mm / inch.	Flow rate l / min ^{2,3}	Fan angle Fan width in mm (inches) ¹								
		10° 51-76 (2-4)	20° 102-152 (4-6)	30° 152-203 (6-8)	40° 203-254 (8-10)	50° 254-305 (10-12)	60° 305-356 (12-14)	70° 356-406 (14-16)	80° 406-457 (16-18)	90° 457-508 (18-20)
0.18 / 0.007	0.18	M09020475	M09020476	—	—	—	—	—	—	—
0.23 / 0.009	0.25	M09020477	M09020478	M09020479	M09020480	—	—	—	—	—
0.28 / 0.011	0.37	M09020481	M09020482	M09020483	M09020484	M09020485	M09020486	—	—	—
0.33 / 0.013	0.57	M09020487	M09020488	M09020489	M09020490	M09020491	M09020492	M09020493	M09020494	—
0.38 / 0.015	0.72	M09020495	M09020496	M09020497	M09020498	M09020499	M09020500	M09020501	M09020502	—
0.43 / 0.017	0.98	M09020503	M09020504	M09020505	M09020506	M09020507	M09020508	M09020509	M09020510	—
0.48 / 0.019	1.30	—	M09020511	M09020512	M09020513	M09020514	M09020515	M09020516	M09020517	—
0.53 / 0.021	1.52	—	—	M09020518	M09020519	M09020520	M09020521	M09020522	M09020523	M09020524
0.58 / 0.023	1.83	—	—	M09020525	M09020526	M09020527	M09020528	M09020529	M09020530	M09020531
0.63 / 0.025	2.13	—	—	M09020532	M09020533	M09020534	M09020535	M09020536	M09020537	M09020538
0.68 / 0.027	2.50	—	—	M09020539	M09020540	M09020541	M09020542	M09020543	M09020544	M09020545
0.73 / 0.028	2.95	—	—	M09020546	M09020547	M09020548	M09020549	M09020550	M09020551	M09020552
0.78 / 0.030	3.42	—	—	M09020553	M09020554	M09020555	M09020556	M09020557	M09020558	M09020559

¹ - Fan width in 300 mm spraying distance with water

² - Flow rate at 100 bar pressure with water, deviation of up to ± 15% to the setpoint is permitted

³ - Use the following formulare to calculate the flow rate (Q2) to a new operating pressure (P2):

$$Q2 = Q1 * \sqrt{\frac{P2}{P1}}$$

P1 = 100 bar, Q1 = flow rate according to table

Nozzle marking



AXX

A – fan angle (e.g. 4 = 40°)

XX – size in inches (e.g. 19 = 0.019")

EcoGun AL MAN/AUTO



FLAT NOZZLE AIRLESS (STANDARD AND FINE FINISH)

Orifice size mm / inch.	Flow rate l / min ^{2,3}	Fan angle					
		Fan width in mm (inches) ¹					
		40° 203-254 (8-10)	50° 254-305 (10-12)	60° 305-356 (12-14)	70° 356-406 (14-16)	80° 406-457 (16-18)	90° 457-508 (18-20)
0.15 / 0.006	0.14	M09020881 [*]	M09020882 [*]	—	—	—	—
0.18 / 0.007	0.18	—	—	—	—	—	—
0.20 / 0.008	0.22	M09020883 [*]	M09020884 [*]	M09020728 [*]	—	—	—
0.23 / 0.009	0.25	M09020901	M09020902	M09020903	—	—	—
0.25 / 0.010	0.33	M09020885 [*]	M09020887 [*]	M09020888 [*]	M09020889 [*]	M09020729 [*]	—
0.28 / 0.011	0.37	M09020904	M09020905	M09020906	M09020907	—	—
0.30 / 0.012	0.47	M09020890 [*]	M09020891 [*]	M09020892 [*]	M09020893 [*]	M09020730 [*]	M09020894 [*]
0.33 / 0.013	0.57	M09020908	M09020909	M09020910	M09020911	M09020912	—
0.35 / 0.014	0.65	M09020895 [*]	M09020896 [*]	M09020897 [*]	M09020898 [*]	M09020899 [*]	M09020900 [*]
0.38 / 0.015	0.72	M09020913	M09020914	M09020915	M09020916	M09020917	—
0.43 / 0.017	0.98	M09020918	M09020919	M09020920	M09020921	M09020922	M09020923

* - Fine finish flat nozzles airless

¹ - Fan width in 300 mm spraying distance with water

² - Flow rate at 100 bar pressure with water, deviation of up to ± 15% to the setpoint is permitted

³ - Use the following formulare to calculate the flow rate (Q2) to a new operating pressure (P2):

$$Q2 = Q1 * \sqrt{\frac{P2}{P1}}$$

P1 = 100 bar, Q1 = flow rate according to table

Nozzle marking



AYY

A – fan angle (e.g. 6 = 60°)

yy – size in mm (e.g. 28 = 0.28 mm)

ORDER NUMBERS – EcoGun AL AUTO

Part no.	Name	Orifice size for material	Nozzle holder thread (male)	Material connector (male)
N36250105	EcoGun Al AUTO S 1116 M14	1,5 mm	11/16"-16 UN	M14x1,5
N36250106	EcoGun Al AUTO B 1116 M14	2,5 mm	11/16"-16 UN	M14x1,5
N36250136	EcoGun Al AUTO S 1116 G14	1,5 mm	11/16"-16 UN	G1/4"
N36250129	EcoGun Al AUTO B 1116 G14	2,5 mm	11/16"-16 UN	G1/4"
N36250132	EcoGun Al AUTO B 78 G14	2,5 mm	7/8"-14 UNF	G1/4"

Note: Spray gun is delivered without nozzle, they need to be ordered separately.