

Hoses and fittings

Air & paint hoses

Product families

Hoses – air & paint hoses

Fittings – air & paint fittings



Hoses

Air & paint hoses

Every application requires some sort of media connection. There are hoses which can be used for pneumatic motor air supply and atomization air for air spray guns. On the other hand there are hoses for fluid supply (paint, glue etc.) from pressure pots to automatic air spray guns. High pressure hoses are used for the delivery of high viscose materials from high pressure pumps. There is a wide range of Dürr hoses that fit into any possible application. Easy configuration on our webshop helps you to select the right hose for your needs.



PRODUCT LINE			
	Air hose with fittings	Low pressure paint hose with fittings	High pressure paint hose with fittings
Part No.	See table on page 119	See table below	See table on page 119
Media	Air	Paint	Paint
Max. fluid pressure	20 bar (290 psi)	20 bar (290 psi)	450bar (6,500psi)
Material	EPDM-Textile	PA-PU-PA	Textile PA / Steel PA
Inner diameter	3/8"	1/4"	1/4" 3/16" 3/8" 1/8"
Connectors	G1/4" / 1/4" NPSM (female)	M16×1.5 / M14×1.5 / G1/4" / 1/4" NPSM / G3/8" / 3/8" NPSM (female)	M16×1.5 / M14×1.5 / G1/4" / 1/4" NPSM
lengths	up to 100 m	up to 100 m	up to 100 m

1 meter = 3.28 feet

ORDER NUMBERS – LOW PRESSURE HOSES WITH FITTINGS

Nummer	Name	Connector A	Connector B	Length
W40650196	Hose 2B P PPP DN6 NR 14B S 14B S 0,4	1/4" BSP (Female)	1/4" BSP (Female)	0.4 m
W40650105	Hose 2B P PPP DN6 NR 14B S 14B S ...	1/4" BSP (Female)	1/4" BSP (Female)	1 m
W40650239	Hose 2B P PPP DN6 NR 14B S 38B S 001	1/4" BSP (Female)	3/8" BSP (Female)	1 m
W40650195	Hose 2B P PPP DN6 NR 14B S 14B S 001	1/4" BSP (Female)	1/4" BSP (Female)	1.5 m
W40650139	Hose 2B P PPP DN6 NR 14B S 14B S ...	1/4" BSP (Female)	1/4" BSP (Female)	2 m
W40650194	Hose 2B P PPP DN6 NR 14B S 14B S 002	1/4" BSP (Female)	1/4" BSP (Female)	2.5 m
W40650246	Hose 2B P PPP DN6 NR 14N S 38B S 002	1/4" NPSM (Female)	3/8" BSP (Female)	2.5 m
W40650238	Hose 2B P PPP DN6 NR 38B S M14 S 004	3/8" BSP (Female)	M14x1,5 (Female)	4 m
W40650119	Hose 2B P PPP DN6 NR 38B S 38B S ...	3/8" BSP (Female)	3/8" BSP (Female)	5 m
W40650191	Hose 2B P PPP DN6 NR 38B S 38B S 006	3/8" BSP (Female)	3/8" BSP (Female)	6 m
W40650204	Hose 2B P PPP DN6 NR 38B S 38B S 007	3/8" BSP (Female)	3/8" BSP (Female)	7.5 m
W40650100	Hose 2B P PPP DN6 NR 14B S 38B S ...	1/4" BSP (Female)	3/8" BSP (Female)	10 m
W40650147	Hose 2B P PPP DN6 NR 38B S 38B S 010	3/8" BSP (Female)	3/8" BSP (Female)	10 m
W40650148	Hose 2B P PPP DN6 NR 38B S 38B S 020	3/8" BSP (Female)	3/8" BSP (Female)	20 m

Hoses

Air & paint hoses

ORDER NUMBERS – HIGH PRESSURE PAINT HOSES WITH FITTINGS

Part no.	Name	Max. pressure	Hose material	Diameter	Connector A	Connector B	Length
W40650189	Hose 25B P TP DN6 NR 14B S 14B S 0,4	250 bar	Textile-PA	DN06 (1/4")	1/4" BSP (F)	1/4" BSP (F)	0.4 m
W40650181	Hose 25B P TP DN6 NR 14BS 14B S 0005	250 bar	Textile-PA	DN06 (1/4")	1/4" BSP (F)	1/4" BSP (F)	0.5 m
W40650187	Hose 25B P TP DN6 NR M16 S M16 S 001	250 bar	Textile-PA	DN06 (1/4")	M16x1,5 (F)	M16x1,5 (F)	1 m
W40650141	Hose 25B P TP DN6 NR 14B S 14B S ...	250 bar	Textile-PA	DN06 (1/4")	1/4" BSP (F)	1/4" BSP (F)	1 m
W40650212	Hose 25B P TP DN6 NR 14N S 14N S 001	250 bar	Textile-PA	DN06 (1/4")	1/4" NPSM (F)	1/4" NPSM (F)	1 m
W40650169	Hose 25B P TP DN6 NR M16 S M16 S 007	250 bar	Textile-PA	DN06 (1/4")	M16x1,5 (F)	M16x1,5 (F)	7 m
W40650235	Hose 25B P TP DN6 NR M16 S M16 S 005	250 bar	Textile-PA	DN06 (1/4")	M16x1,5 (F)	M16x1,5 (F)	5 m
W40650216	Hose 25B P TP DN6 NR 14N S 14N S 006	250 bar	Textile-PA	DN06 (1/4")	1/4" NPSM (F)	1/4" NPSM (F)	6 m
W40650236	Hose 25B P TP DN6 NR M16 S M16 S 006	250 bar	Textile-PA	DN06 (1/4")	M16x1,5 (F)	M16x1,5 (F)	6 m
W40650240	Hose 25B P TP DN6 NR 14B S 14B S 007	250 bar	Textile-PA	DN06 (1/4")	1/4" BSP (F)	1/4" BSP (F)	7 m
W40650245	Hose 25B P SP DN4 NR 14B S 14N S 007	250 bar	Textile-PA	DN06 (1/4")	1/4" BSP (F)	1/4" NPSM (F)	7 m
W40650248	Hose 25B P TP DN6 NR M16 S 14N S 007	250 bar	Textile-PA	DN06 (1/4")	M16x1,5 (F)	1/4" NPSM (F)	7.5 m
W40650180	Hose 25B P TP DN5 NR 14N S 14N S 075	250 bar	Textile-PA	DN05 (3/16")	1/4" NPSM (F)	1/4" NPSM (F)	7.5 m
W40650133	Hose 25B P TP DN6 NR 14N S 14N S ...	250 bar	Textile-PA	DN06 (1/4")	1/4" NPSM (F)	1/4" NPSM (F)	7.5 m
W40650241	Hose 32B P SP DN6 NR M16 S 14N S 007	320 bar	Steel-PA	DN06 (1/4")	M16x1,5 (F)	1/4" NPSM (F)	7.5 m
W40650231	Hose 32B P SP DN6 NR M16 S 14N S 010	320 bar	Steel-PA	DN06 (1/4")	M16x1,5 (F)	1/4" NPSM (F)	10 m
W40650102	Hose 32B P SP DN6 NR M16 S 14N S ...	320 bar	Steel-PA	DN06 (1/4")	M16x1,5 (F)	1/4" NPSM (F)	15 m
W40650237	Hose 35B P SP DN5 NR M16 S M16 S 010	350 bar	Steel-PA	DN05 (3/16")	M16x1,5 (F)	M16x1,5 (F)	10 m
W40650244	Hose 45B P SP DN8 NR M16 S M16 S	425 bar	Steel-PA	DN08 (3/4")	M16x1,5 (F)	M16x1,5 (F)	30 m
W40650182	Hose 45B P SP DN6 NR 14B S 14B S 001	450 bar	Steel-PA	DN06 (1/4")	1/4" BSP (F)	1/4" BSP (F)	1 m
W40650188	Hose 45B P SP DN6 NR 14B S 14B S 001	450 bar	Steel-PA	DN06 (1/4")	1/4" BSP (F)	1/4" BSP (F)	1.5 m
W40650183	Hose 45B P SP DN6 NR 14B S 14B S 002	450 bar	Steel-PA	DN06 (1/4")	1/4" BSP (F)	1/4" BSP (F)	2 m
W40650242	Hose 45B P SP DN9 NR M16 S M16 S 030	450 bar	Steel-PA	DN09 (3/8")	M16x1,5 (F)	M16x1,5 (F)	30 m

ORDER NUMBERS – AIR HOSES WITH FITTINGS

Part no.	Name	Connector A	Connector B	Length
W40650247	Hose 2B A ET DN9 NR 14N S 14N S 0025	1/4" NPSM (Female)	1/4" NPSM (Female)	2.5 m
W40650230	Hose 2B A ET DN9 NR 14B S 14B S 0040	1/4" BSP (Female)	1/4" BSP (Female)	4 m
W40650117	Hose 2B A ET DN9 NR 14B S 14B S 0050	1/4" BSP (Female)	1/4" BSP (Female)	5 m
W40650218	Hose 2B A ET DN9 NR 14B S 14B S 0060	1/4" BSP (Female)	1/4" BSP (Female)	6 m
W40650155	Hose 2B A ET DN9 NR 14B S 14B S 0070	1/4" BSP (Female)	1/4" BSP (Female)	7 m
W40650134	Hose 2B A ET DN9 NR 14N S 14N S 0075	1/4" NPSM (Female)	1/4" NPSM (Female)	7.5 m
W40650101	Hose 2B A ET DN9 NR 14B S 14B S 0100	1/4" BSP (Female)	1/4" BSP (Female)	10 m
W40650234	Hose 2B A ET DN9 NR 14B S 14B S 0150	1/4" BSP (Female)	1/4" BSP (Female)	15 m
W40650128	Hose 2B A ET DN9 NR 14B S 14B S 0200	1/4" BSP (Female)	1/4" BSP (Female)	20 m
W40650243	Hose 2B A ET DN9 NR 14B S 14B S 0300	1/4" BSP (Female)	1/4" BSP (Female)	30 m

1 meter = 3.28 feet

Hoses

Air & paint hoses



PRODUCT LINE – AIR HOSES

	Hose 2x4 blue PA	Hose 2,7x4 blue PA	Hose 4x6 blue PA	Hose 6x8 blue PA
Part No.	W40030304	W40030233	W40030001	W40030002
Max. air pressure	10 bar (145 psi)	10 bar (145 psi)	10 bar (145 psi)	10 bar (145 psi)
Material	PA	PA	PA	PA
Inner/Outer diameter	2x4 mm	2.7x4 mm	4x6 mm	6x8 mm
lengths	any length	any length	any length	any length



	Hose 6x9 blue PA	Hose 8x10 blue PA	Hose 9x12 blue PA
Part No.	W40030013	W40030017	W40030019
Max. air pressure	10 bar (145 psi)	10 bar (145 psi)	10 bar (145 psi)
Material	PA	PA	PA
Inner/Outer diameter	6x9 mm	8x10 mm	9x12 mm
lengths	any length	any length	any length



PRODUCT LINE – MATERIAL HOSES

	Hose 4x6 transparent PFA	Hose 6x8 transparent PFA	Hose 6x9 transparent PFA	Hose 9x12 transparent PFA
Part No.	W40030534	W40030471	W40030496	W40030495
Max. fluid pressure	20 bar (290 psi)	20 bar (290 psi)	20 bar (290 psi)	20 bar (290 psi)
Material	PFA	PFA	PFA	PFA
Inner/Outer diameter	4x6 mm	6x8 mm	6x9 mm	9x12 mm
lengths	any length	any length	any length	any length



	Hose 4x6 nature PTFE	Hose 6x8 nature PTFE	Hose 6x9 nature PTFE	Hose 9x12 nature PTFE
Part No.	W40030722	W40030744	W40030723	W40030721
Max. fluid pressure	20 bar (290 psi)	20 bar (290 psi)	20 bar (290 psi)	20 bar (290 psi)
Material	PTFE	PTFE	PTFE	PTFE
Inner/Outer diameter	4x6 mm	6x8 mm	6x9 mm	9x12 mm
lengths	any length	any length	any length	any length

Fittings

Air & paint fittings



PRODUCT LINE – AIR FITTINGS

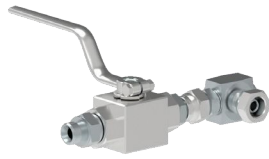
	Connection air D7,2 d10/12 EU	Air connection swivel 1/4"i D7,2 EU	Screwed plug-in connection D6 G1/8" N Ms
Part No.	M01010185	M01300006	M57380003
Threads	G1/4" (female) coupling D7.2 d10/12 EU	G1/4" (female) coupling D7.2 d10/12 EU	G1/8" (male) hose 4x6 mm
Material	Brass	Brass	Brass
Max. air pressure	35 bar (508 psi)	10 bar (145 psi)	20 bar (290 psi)
Related products	EcoGun AS MAN	EcoGun	EcoGun



	Screwed plug-in connection D8 G1/4" N	Push-in nipple\DN7 G1/4"a Ms	Quick change connection DN7 G1/4"a
Part No.	M57380009	M58900058	N40030046
Threads	G1/4" (male) hose 6x8 mm	G1/4" (male)	G1/4" (male)
Material	Brass	Brass	Brass
Max. air pressure	20 bar (290 psi)	16 bar (232 psi)	16 bar (232 psi)
Related products	EcoGun	Quick change connection DN7 G1/4"a	Push-in nipple DN7 G1/4"a Ms Air connection swivel 1/4"i D7,2 EU Connection air D7,2 d10/12 EU

Fittings

Air & paint fittings



PRODUCT LINE – PAINT FITTINGS		
	Ball valve pressure drain module OMK SST	Ball valve discharge-piece DOK SST
Part No.	M54300607	M54300608
Threads	M16x1.5 (male) M16x1.5 (female)	M16x1.5 (male) M16x1.5 (female)
Material	Stainless steel	Stainless steel
Max. fluid pressure	500 bar (7,250 psi)	500 bar (7,250 psi)
Related products	EcoPump VP Package	EcoPump VP Package



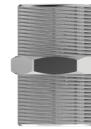
	ELBOW SCREW CONNECTION\G1/4" a-a 60°KONUS	Elbow screw con. adjust. G1/4" - 1/4" NPS(M)	Screw-in fitting WJ	Screw-in fitting WJ	Screw-in fitting WT
Part No.	M55030201	M55030173	M55070363	M55070368	M06150149
Threads	G1/4" (male)	1/4" NPSM (male) G1/4" (female)	M16x1.5 (male) G1/4" (male)	M16x1.5 (female) G3/8" (male)	1/4" NPSM (female) G1/4" (male)
Material	Stainless steel	Stainless steel	Stainless steel	Stainless steel	Stainless steel
Max. fluid pressure	775 bar (11,240 psi)	775 bar (11,240 psi)	500 bar (7,250 psi)	500 bar (7,250 psi)	500 bar (7,250 psi)
Related products	EcoMCC 200	EcoDose 3K	EcoPump VP, HP filter	EcoPump VP, HP filter	EcoGun AI MAN 300



	Screw-in fitting M14x1,5 - 3/8" Universal (male)	Screw-in fittings WT M16x1,5 - G3/8" SST	Reducing screw connection M16x1,5i 60°	Reducing Screw Connection \G3/4" a G3/8" a	T-Screw Connection Adjustable\G1/4" 60°
Part No.	M55070387	M55070394	M55100169	M55100192	M55110043
Threads	M14x1.5 (female) 3/8" Universal (male)	M16x1.5 (male) G3/8" (male)	M16x1.5 (female) 1/4" NPS (male)	G3/4" (male) G3/8" (male)	G1/4" (female) G1/4" (male)
Material	Stainless steel	Stainless steel	Stainless steel	Stainless steel	Stainless steel
Max. fluid pressure	20 bar (290 psi)	500 bar (7,250 psi)	500 bar (7,250 psi)	430 bar (6,237 psi)	775 bar (11,240 psi)
Related products	EcoGun 246 / 249	EcoPump VP HP filter	EcoPump VP, HP filter EcoGun AI MAN EcoGun AA MAN	EcoFlow HPF EcoFlow HPR	

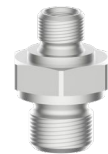
Fittings

Air & paint fittings

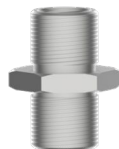


PRODUCT LINE – PAINT FITTINGS

	L screw-in fitting 90°	Reducing Nipple\G3/4" a- G1/4" i VA8	Double nipple R1/2" - R1/2" L44 GF280 SST	Double nipple R3/8" - R3/8" L38 GF280 VA8
Part No.	M55270018	M56100265	M56110053	M56110057
Threads	M30x1.5 (female) G1/2" (female)	G3/4" (male) G1/4" (female)	R1/2" (male)	R3/8" (male)
Material	Stainless steel	Nickel-plated brass	Stainless steel	Stainless steel
Max. fluid pressure	50 bar (725 psi)	400 bar (5,800 psi)	50 bar (725 psi)	50 bar (725 psi)
Related products	EcoPump VP	EcoFlow HPF/R	EcoPump AD	EcoFlow IPF, EcoPump AD



	Double nipple R1/2" a- R1/4" a L33 VA8	Double nipple R3/8" a- R1/8" a L25,5 SST	Double nipple G1/4" a- 1/4" UN1a L24 SST	Double nipple G1/8" a- 1/4" a L28,5 60°in
Part No.	M56110096	M56110307	M56110426	M56110454
Threads	R1/2" (male) R1/4" (male)	R3/8" (male) R1/8" (male)	G1/4" (male) 1/4" Universal (male)	G1/8" (male) G1/4" (male)
Material	Stainless steel	Stainless steel	Stainless steel	Stainless steel
Max. fluid pressure	50 bar (725 psi)	50 bar (725 psi)	50 bar (725 psi)	400 bar (5,800 psi)
Related products	EcoPump AD	EcoDose, EcoFlow IPF	EcoGun AS AUTO pro EcoGun AS AUTO pro HD	EcoDose, EcoFlow IPF



	Double nipple G1/2" a G1/2" a Z St	Double Nipple\G1/4" a L29 VA	Reducing Bush R1" i- R3/8" i GF240 SST
Part No.	M56110479	M56110480	M56240061
Threads	G1/2" (male)	G1/4" (male)	G1" (female) G3/8" (female)
Material	zinc plated steel	Stainless steel	Stainless steel
Max. fluid pressure	400 bar (5,800 psi)	775 bar (11,240 psi)	50 bar (725 psi)
Related products	EcoPump AD	EcoMCC 200	EcoFlow IPF

Fittings

Air & paint fittings



PRODUCT LINE PAINT FITTINGS

	Push-in nipple G1/2"i L35	Quick connector 3/8"i SS	Quick connector 3/8"i return valve VA	EcoTube DN25 M42x2 - G3/4" SST	Quick change bushing G3/8"a 60G SST
Part No.	M58900227	M58940013	M58940019	M80110016	N40040062
Threads	G1/2" (female) push-in	G3/8" (female)	G3/8" (female) with a check valve	DN25 (M42x2) G1" (male)	G3/8" (male)
Material	Brass	Stainless steel	Stainless steel	Stainless steel	Stainless steel
Max. fluid pressure	35 bar (508 psi)	20 bar (290 psi)	20 bar (290 psi)	25 bar (360 psi)	20 bar (290 psi)
Related products	EcoGun AS MAN	Quick change bushing G3/8"a 60G SST EcoGun	Quick change bushing G3/8"a 60G SST EcoGun	IP filter EcoPump HP EcoPump HPE	Quick connector 3/8"i SST, Quick connector 3/8"i return valve VA EcoGun



PRODUCT LINE – DÜRR EcoPlug FITTINGS

	Straight plug connection D = 13	Straight plug connection D = 9	Nipple insert D = 9	Grounding Device D = 13
Part No.	M58030120 (3x5) M58030121 (3x6) M58030136 (4x6) M58030136 (3.6x6) M58030143 (6x8) M58030134 (6x9) M58030125 (9x12)	M58030138 (2.7x4)	M58030185 (3x5) M58030167 (4x6)	M01520001 (6x9) M01520002 (9x12)
Threads	—	—	—	—
Material	Stainless steel	Stainless steel	Stainless steel	Stainless steel
Max. fluid pressure	35 bar (508 psi)	35 bar (508 psi)	35 bar (508 psi)	35 bar (508 psi)
Related products	EcoMCC3 20, EcoPump9 GW	EcoMCC3 20, EcoPump9 GW	EcoMCC3 20, EcoPump9 GW	EcoMCC3 20, EcoPump9 GW

Fittings

Air & paint fittings



PRODUCT LINE – DÜRR EcoPlug FITTINGS

	Straight plug connection D = 13	Straight plug connection D = 9	Nipple insert D = 9	Grounding Device D = 13
Part No.	M57030032 (3x6) M57030038 (4x6) M57030040 (6x8) M57030039 (6x9) M57030037 (9x12)	M57320008 (3x6) M57320007 (4x6) M57320010 (6x8) M57320006 (6x9) M57320009 (9x12)	M57410028 (3x6 3x6) M57410022 (4x6 4x6) M57410021 (6x9 6x9) M57410020 (9x12 9x12)	M57410040 (9x12 6x9)
Threads	—	—	—	—
Material	Stainless steel	Stainless steel	Stainless steel	Stainless steel
Max. fluid pressure	35 bar (508 psi)	35 bar (508 psi)	35 bar (508 psi)	35 bar (508 psi)
Related products	EcoMCC3 20, EcoPump9 GW	EcoMCC3 20, EcoPump9 GW	EcoMCC3 20, EcoPump9 GW	EcoMCC3 20, EcoPump9 GW



	L plug connection D = 13	L nipple insert D = 13	Screw-in plug connector	Non-return valve screw-in plug connector
Part No.	M57360025 (6x9 6x9) M57360024 (9x12 6x9) M57360023 (9x12 9x12) M57360026 (6x9 4x6)	M57360055 (4x6 4x6) M57360052 (D13 4x6) M57360056 (D13 D13)	M57380085 (G3/8 6x9) M57380084 (G3/8 9x12) M57380134 (G3/8 12x17) M57580017 (G1/8 6x9) M57580018 (G1/8 9x12) M57380192 (G1/8 12x17)	M54360183 (G1/8 4x6) M54360184 (G1/8 6x9)
Threads	—	—	G1/8 / G3/8	G1/8
Material	Stainless steel	Stainless steel	Stainless steel	Stainless steel
Max. fluid pressure	35 bar (508 psi)	35 bar (508 psi)	35 bar (508 psi)	35 bar (508 psi)
Related products	EcoMCC3 20, EcoPump9 GW	EcoMCC3 20, EcoPump9 GW	EcoMCC3 20, EcoPump9 GW	EcoMCC3 20, EcoPump9 GW

Fittings

Air & paint fittings



PRODUCT LINE – DÜRR EcoPlug FITTINGS

	Non-return valve screw- in plug connector D = 13	Schott plug connection hose/hose D = 13	Schott plug connection hose/hose D = 18	KOR Reducer D = 18
Part No.	M54360185 (4x6) M54360209 (6x8)	M57390029 (6x9 4x6) M57390027 (6x9 6x9) M57390026 (9x12 6x9) M57390028 (9x12 9x12)	M57390031 (Tube:9x12 6x9) M57390030 (Tube:9x12 9x12)	M55100124 (Tube:6x9)
Threads				
Material	Stainless steel	Stainless steel	Stainless steel	Stainless steel
Max. fluid pressure	35 bar (508 psi)	35 bar (508 psi)	35 bar (508 psi)	35 bar (508 psi)
Related products	EcoMCC3 20, EcoPump9 GW	EcoMCC3 20, EcoPump9 GW	EcoMCC3 20, EcoPump9 GW	EcoMCC3 20, EcoPump9 GW



	Bulkhead connector pipe/ pipe D = 18	Schott adapter hose D = 13	Schott adapter pipe D = 18	Screw-in plug connector adapter
Part No.	M57390042 (Tube:9x12 Tube:9x12)	M57390044 (6x9 M13) M57390043 (9x12 M13)	M57390041 (Tube:9x12 M13)	M57380129 (D13 G1/8)
Threads				G1/8
Material	Stainless steel	Stainless steel	Stainless steel	Stainless steel
Max. fluid pressure	35 bar (508 psi)	35 bar (508 psi)	35 bar (508 psi)	35 bar (508 psi)
Related products	EcoMCC3 20, EcoPump9 GW	EcoMCC3 20, EcoPump9 GW	EcoMCC3 20, EcoPump9 GW	EcoMCC3 20, EcoPump9 GW