

# Pressure relief valves

## Product families

Pressure relief valves



# Pressure relief valves

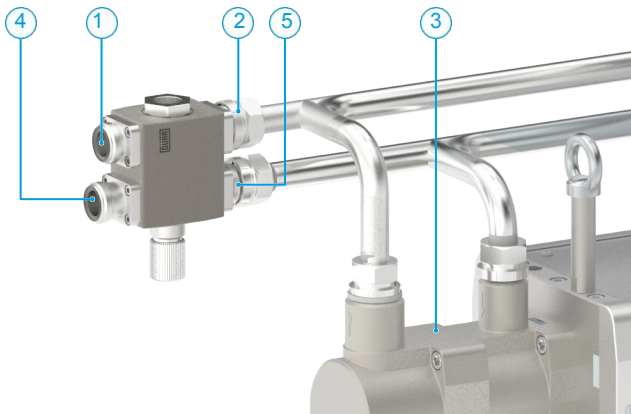
As an enhancement to the **EcoPump HPE**, the pressure relief valve prevents possible damages caused by unpredictable excess pressure. It is simply connected directly to the outlet of the pump. Protection against pressure peaks and improper use is guaranteed by the pressure actuated valve. By using the optionally available sensor in the relevant port, the pressure relief valve is the perfect interface to allow full closed-loop control of the pump. Typical fluids include water and solvent-borne paints, varnishes, enamels and lacquers.



## PRODUCT LINE

	Pressure relief valve DS Exd 21 bar DN25	Pressure relief valve DS Exi 21 bar DN25	Pressure relief valve 21bar DN25
Part No.	N32170009	N32170010	N32170011
Weight	8.8 kg	8.8 kg	7.2 kg
Connector	EcoTube DN25 (male)	EcoTube DN25 (male)	EcoTube DN25 (male)
Max. fluid pressure	21 bar (305 psi)	21 bar (305 psi)	21 bar (305 psi)
Equipment	Flame proof pressure switch	Intrinsically safe pressure switch	None

## TECHNICAL ILLUSTRATION



1 Pressure pipe out, 2 Pressure pipe in, 3 Pump, 4 Suction pipe out, 5 Suction pipe in

## CUSTOMER BENEFITS



- Prevention of excessive pressure
- Relieved fluid is directly redirected into suction line
- Stainless steel design
- Standard connections
- Direct connection to pump inlet and outlet
- Tested according to Durr quality standards
- ATEX Ex II 2G Ex h IIA T6 Gb X