



Dosing units

Solution for 2K and 3K paint application



Product families

EcoDose 2K – dosing units for two component materials

EcoDose 3K – dosing units for three component materials

EcoDose 2K Easy – dosing unit for two component materials

EcoDose 3K

Dosing units for three component materials

The Dürr **EcoDose 3K** unit is an electronic dosing system suitable for high and low pressure applications. It can be used in manual and automatic processes. Optimized for quick color changes and easy flushing, it enhances resource utilization and contributes to higher application efficiency. Fluids are measured consistently and precisely, even media with different viscosities. Typical fluids handled are 1K, 2K or 3K materials, water and solvent-borne paints, varnishes, lacquers and monolayer paints.

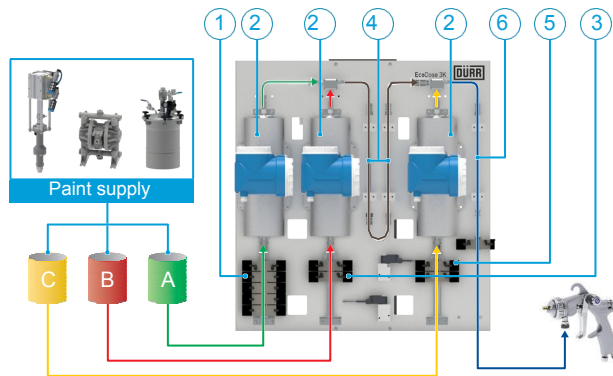


PRODUCT LINE	
	EcoDose 3K
Part No.	N10110001V
Max. fluid pressure	20 / 160 / 200 bar (290 / 2,320 / 2,900 psi)
Flow rate	40 – 4,000 cc/min *
Fluid viscosity range	30 – 2,000 mPas (cps) **
Flow meter type	Coriolis / Gear wheel
Temperature measurement	yes (Coriolis only) - upon request

* Depending on flow meter type and fluid technical specs. (viscosity, paint supply equipment and pressures, ...)

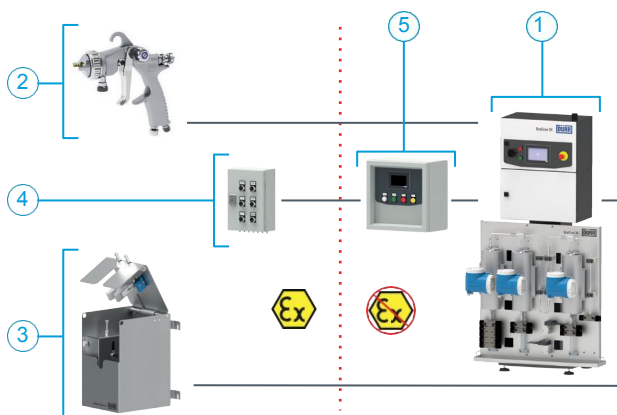
** Range to be considered as general indication, actual values depending on job related paintshop conditions

TECHNICAL ILLUSTRATION



1 Color change block component A, 2 Flow control / Measuring cell component A / B & C, 3 Color change block component B, 4 Static mixer component A & B, 5 Color change block component C, 6 Static mixer component A/B & C

CONNECTION SCHEME



1 EcoDose 3K, 2 EcoGun, 3 Spray gun cleaner, 4 Pneumatic remote control, 5 Remote control HMI

CUSTOMER BENEFITS



Flow rate measurement by Coriolis or gear flow measuring cell

Exact volumetric dosing of all three components

Constant and precise accuracy of the mixing ratio

Monitoring of all dosing functions such as pot life, flow / mixing ratio of the single and mixed components incl. dedicated alarms

Automatic color change

Independent flushing circuits for both components

No premixing chamber

Implementation and control of the EcoDose 3K via higher level control possible

Intuitive user interface for quick programming of individual settings

High process reliability

Automatic flow control with programmed setpoint [cc/min] available without additional hardware

Optional remote diagnosis and remote control available

EcoDose 3K

Dosing units for three component materials

EcoDose 3K		Cod	Optio
Option	Cod	e	Version
Pressure range *			
low pressure (max. 20 bar)	20	EU	EU
High pressure (max. 160 / 200 bar)	200	US	US
Application process			
Standard Mode	M	y	Closed loop flow control yes
Design	G	N	No
Mounted on stand	S		
Remote fluid sect., stand	RS	y	Preparation for dump valve yes
Remote fluid sect., no stand	RN	N	None
Isolation for high tension	S		
No	N	y	Preparation remote diagnosis yes **
		N	None
Drip tray			
No	N	N	Remote control None
yes	y	M	Magnetic switch box (Non Ex)
Filter compressed air inlet		P	Pneumatic with separate visulisation (Ex)
None	N		
5 µm	F5		
Signal tower			
None	N	1GC 1	Preparation EcoGun Cleaner M EcoGun Cleaner M
Three colors	S	2GC 2	EcoGun Cleaner M
Flow control type comp. A ***	T	N	None
Gear 0.005..2 l/min	GF		No. of controlled atomizers
Gear 0.02..3 l/min	1	1	1
Coriolis (160 bar)	GF	2	2
Coriolis (200 bar)	2		
Flow control type comp. B ***	CF	N	Color flow regulator None
Gear 0.005..2 l/min	GF		P25 Pneumatic 2.5 l/min
Gear 0.02..3 l/min	CF		Mixing ratio
Coriolis (160 bar)	BF	IR	< 10:1
Coriolis (200 bar)	2	HR	> 10:1
Flow control type comp. C ***	CF	2-10	No. of component A - deadend (paint) 2/4/6/8/10 (20bar) 1/3/5/7/9 (160/200bar) ****
Gear 0.005..2 l/min	GF		No. of component A - circulation (paint)
Gear 0.02..3 l/min	CF	2-10	2/4/6/8/10 (20bar) **** No. of component B -
Coriolis (160 bar)	BF		
Coriolis (200 bar)	2	1	deadend 1
No. of component C - deadend	CF	3	3
1	1		
3	CF		
	2		

* High pressure system available with Coriolis 160 bar or 200 bar

** GSM card not scope of supply

*** Available also with mixed configuration of flow control (coriolis and gear flow meter)

**** Max. 10 colors in combination circulation and deadend (20bar) possible